

# 3<sup>rd</sup> European Transoesophageal Echocardiography Course on Congenital Heart Disease

Great Ormond Street  
Hospital for Children  
NHS Foundation Trust

**UCL**  
INSTITUTE OF CHILD HEALTH

London, 2-3 February 2017

## What is this course about?

This is the third dedicated course on transoesophageal echocardiography (TOE) on congenital heart disease providing the participant with the essential theoretical basics, morphological aspects of common lesions in congenital heart disease as well as practical aspects of TOE in children and adults with congenital heart disease. The two-day course will provide hands-on TOE simulator experience with particular focus on congenital lesions frequently encountered in clinical practice. All practical sessions will be directly supervised by experienced TOE operators in this field. Participants will have opportunities to discuss challenging cases with instructors individually. This course is an ideal complementation to the popular "European Echocardiography Course on Congenital Heart Disease". For more information and online registration go to [www.echocardiography-course.com](http://www.echocardiography-course.com).

## What will you learn?

- By the end of this course participants will have a good understanding of the physics involved in transoesophageal echocardiography (TOE) and understand indications and limitations of TOE in children and adults with congenital heart disease
- Side-by-side comparison of cardiac morphology and TOE will enable delegates to appreciate the complexity in congenital heart disease and how to apply this in clinical TOE practice.
- Delegates will gain an overview of current advances in TOE imaging modalities and new emerging roles for TOE in congenital heart disease.
- Participants will have learnt about the challenges in imaging complex patients through case-based discussions with experts in the field and will have gained further insight into TOE guided device closures of challenging cases with congenital heart disease.
- Delegates will gain confidence in operating TOE probes safely and succinctly under expert supervision using hands-on TOE simulator training sessions, which will prepare them for the clinical use of TOE in children and adults with congenital heart disease.

## Who should attend?

This course is aimed at clinical staff working in the field of paediatric or adult congenital heart disease. Whether you are working in paediatric cardiology, cardiac theatres, interventional angiography suites, echocardiography laboratories or specialising in grown-up congenital heart disease this course will expand your knowledge, experience and refresh your TOE practice in patients with congenital heart disease.

## Fees:

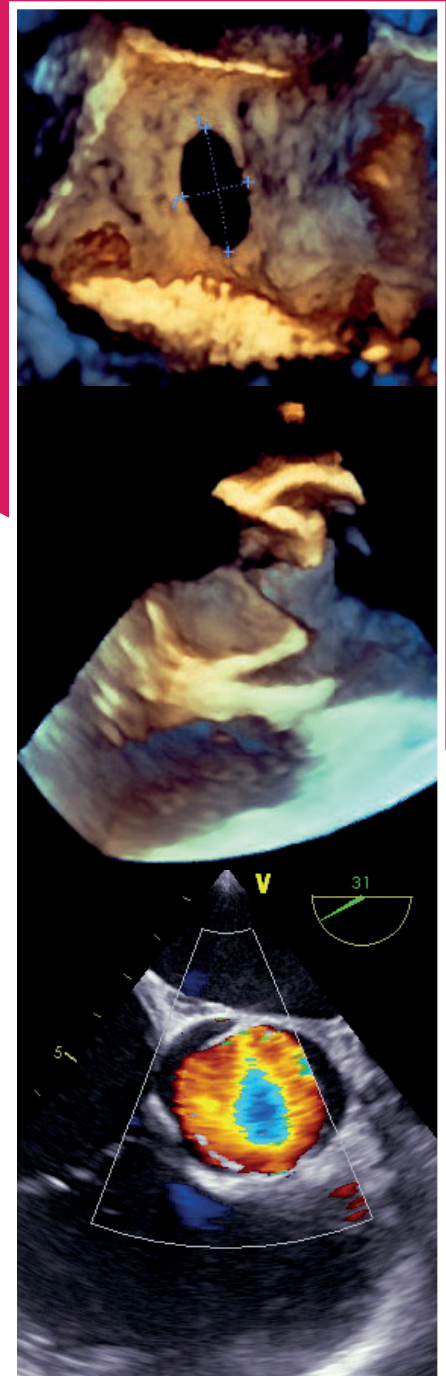
**Early Bird:**  
£480 (expires on 05/12/2016)  
**Standard:**  
£550 (after 05/12/2016)

## Course organisation:

Michelle Carr & Jan Marek (London)

## Course directors:

Jan Marek (London)  
Luc Mertens (Toronto)  
Folkert Meijboom (Utrecht)



Accreditation from EBAC European Board for Accreditation in Cardiology has been applied for.

For further details visit [www.ichevents.com](http://www.ichevents.com) or contact the ICH Events Office,  
telephone: +44 (0)20 7905 2699 or +44 (0)20 7905 2675, email [ich.events@ucl.ac.uk](mailto:ich.events@ucl.ac.uk)